

Penyelenggara:



ISIF 2023

INDONESIA SOCIAL INVESTMENT FORUM

AKSELERASI PENCAPAIAN SDGs PASCA-COVID-19

Partner:



BREAKOUT 1 - ORCHID ROOM

PENCAPAIAN KINERJA PEMBANGUNAN LINGKUNGAN 2015-2022

Narasumber:

Riki Frindos - Yayasan KEHATI

The Westin Resort Nusa Dua, Bali

13 Desember 2023



KEHATI



KEHATI & SUSTAINABILITY AGENDA

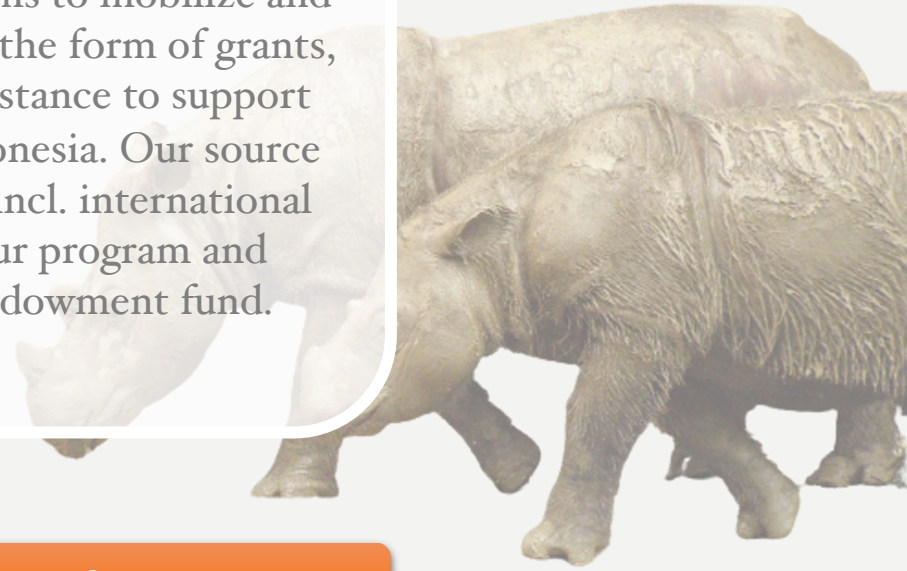
Bali – 13 December 2023

RIKI FRINDOS, SCR, CESGA
CHAIR OF THE EXECUTIVE BOARD – KEHATI FOUNDATION



KEHATI

Established in 1994 by several national figures led by Prof. Dr. Emil Salim, KEHATI Foundation aims to mobilize and manage funding and then distribute it in the form of grants, facilitation, consultation and other assistance to support our environmental programs across Indonesia. Our source of funding comes from various donors, incl. international multilateral and bilateral agencies. Our program and operation are also supported by an endowment fund.



ALAM LESTARI UNTUK
MANUSIA KINI DAN
MASA DEPAN ANAK
NEGERI

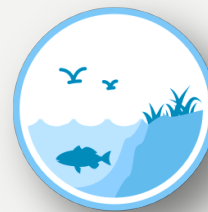
KEHATI's Four Areas of Intervention



FORESTRY



AGRICULTURE



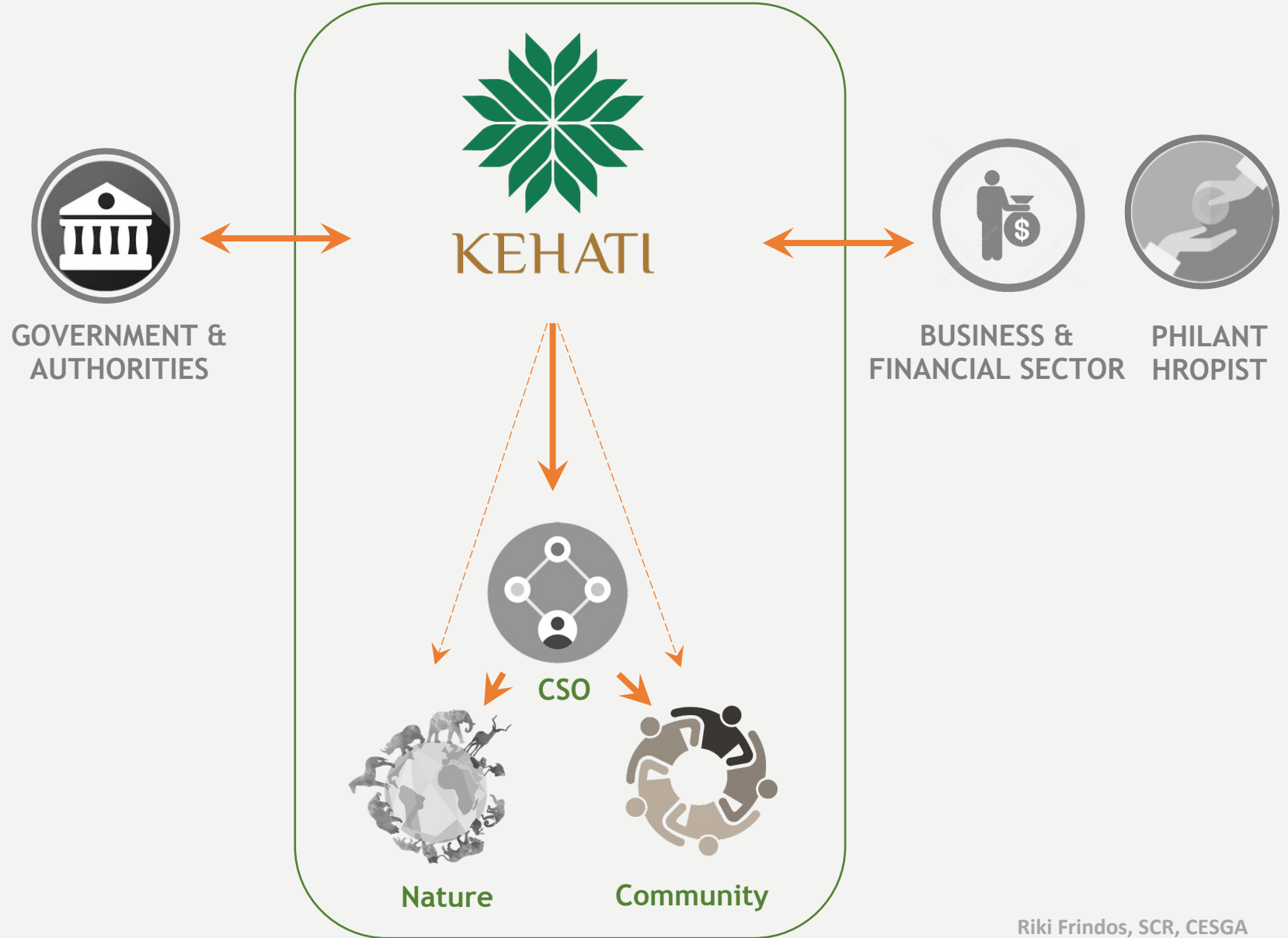
MARINE



SUSTAINABLE INVESTMENT



GRANT MAKING,
BRIDGING,
FACILITATING, AND
EMPOWERING



SDGs: OUR PRIMARY GOALS



SDGs & KEHATI (2020)

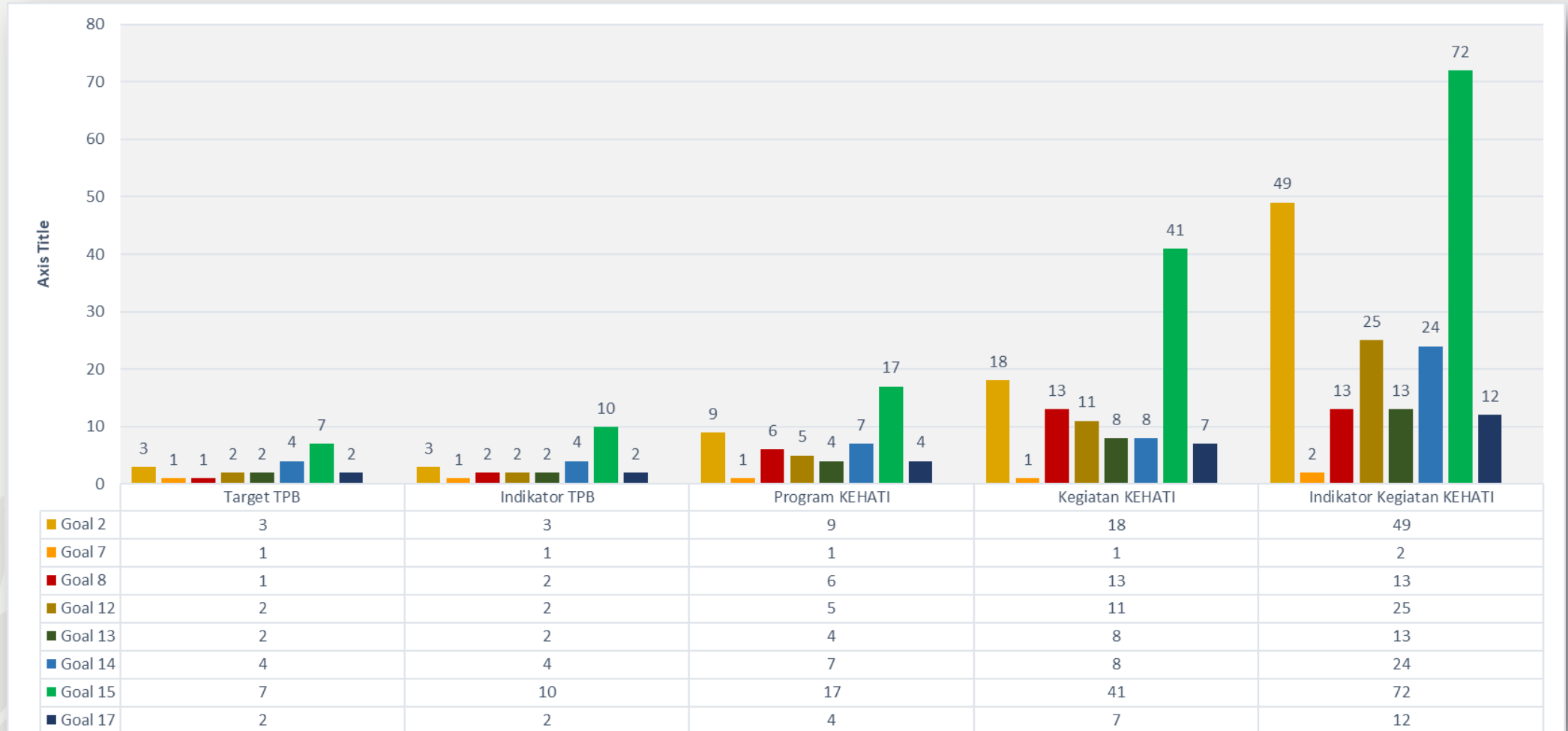
108 Activities

206

Activities indicators



SDGs Goal, Target, Indicator and KEHATI Program (2020)



KEHATI IN RECENT YEARS



Accelerating **Marine** conservation program: esp Mangrove and MPA management, and venturing into new areas, eg. **Bioprospecting, Urban Biodiversity, etc.**



Extending our footprint into **capital market** and financial communities: ESG Index, ESG mutual fund, ESG Award, Impact investing



Significantly Expanding our **youth movement** across Indonesia



Strengthening our internal financial management, more diversified financial sources, integrating impact/investment/fundraising activities



OUR 4 PILLARS +



FORESTRY

Rehabilitasi dan Restorasi Ekosistem, Perlindungan Hewan Langka, Agroforestry, Taman Kehati, Konservasi Bambu, Climate Mitigation, Renewable Energy, dll



AGRICULTURE

Pangan Lokal, eg. Sorgum, Sagu; Pertanian Berkelanjutan, Pertanian Organik, Tata Kelola Kopi, Bioprospecting, Climate Adaptation, dll



MARINE

Restorasi Ekosistem Mangrove, Terumbu Karang, Perlindungan Hewan Langka Laut, Pengelolaan Kawasan Konservasi Laut, Pengelolaan Sampah Laut, Ekowisata, dll



SUSTAINABLE INVESTING

ESG integration in capital market, ESG indices, impact investing, impact entrepreneurs



**BIODIVERSITY
WARRIORS**



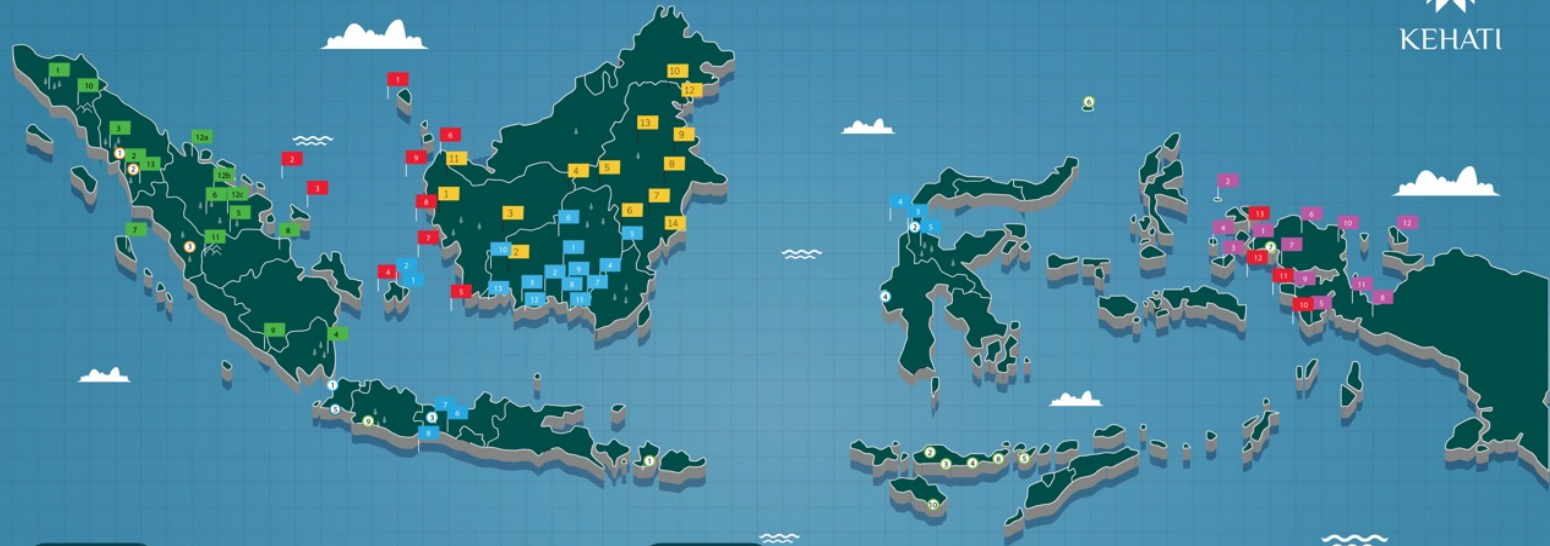


KEHATI



KEHATI

Peta Kerja KEHATI



Program Reguler

Kehutanan

1. Kab. Tapanuli Selatan
2. Kab. Batang Toru, Sumatera Utara
3. Kota Sawahlunto, Sumatera Barat

Pertanian

1. Kab. Lombok Tengah
2. Kab. Manggarai
3. Kab. Manggarai Timur
4. Kab. Ngada
5. Kab. Lembata
6. Kepulauan Sangihe
7. Pulau Salawati
8. Kab. Flores Timur
9. Kab. Bandung Barat
10. Sumba Timur

Kelautan

1. Pulau Sangiang, Banten
2. Pantai Teluk Palu, Kab. Donggala, Prov. Sulawesi
3. Kab. Brebes, Jateng
4. Kab. Majene, Sulbar
5. Kab. Pandeglang, Banten

Program Khusus

TFCFA Sumatera

1. Hutan Seilawah - Ulu Masen,
2. Hutan Daratan Rendah Angkola,
3. DAS Toba barat,
4. Taman Nasional Way Kambas,
5. Taman Nasional Bukit Tiga Puluh,
6. Taman Nasional Tesso Nilo,
7. Taman Nasional Siberut dan Kepulauan Mentawai,
8. Ekosistem Sembilang - Taman Nasional Berbak,
9. Taman Nasional Bukit Barisan Selatan,
10. Ekosistem Leuser dan Taman Nasional Gunung Leuser
11. Ekosistem Kerinci Seblat,
12. Kerumutan-Semerang Kampar-Senepis,
13. Batang Toru dan Taman Nasional Batang Gadis

TFCFA Kalimantan

1. Kab. Kubu Raya
2. Kab. Lamandau
3. Kab. Melawi
4. Kab. Kapuas Hulu
5. Kab. Mahakam Ulu
6. Kab. Kutai Barat
7. Kab. Kutai Kartanegara
8. Kab. Kutai Timur
9. Kab. Berau
10. Kab. Nunukan
11. Kab. Bengkayang
12. Kota Tarakan
13. Kab. Malinau
14. Kota Balikpapan

BAF

1. Kabupaten Raja Ampat
2. Pulau Piai dan Pulau Sayang
3. Pulau Misool
4. Pulau Kofiau
5. Kabupaten Kaimana
6. Kabupaten Tambora
7. Kabupaten Sorong
8. Kabupaten Nabire
9. Kabupaten Fakfak
10. Kabupaten Manokwari
11. Kabupaten Teluk Wondama
12. Kabupaten Biak Numfor

USAID Kolektif

- Provinsi Kep. Riau
1. Kepulauan Anambas
 2. Bintan
 3. Bintan Tambelan
- Provinsi Kep. Bangka Belitung
4. Belitung
- Provinsi Kalimantan Barat
5. Kendawangan
 6. Paloh
 7. Kubu Raya dan Kayong Utara
 8. Kubu Raya
 9. Kepulauan Randayan
- Provinsi Papua Barat
10. Teluk Berau, Arguni, Kaimana, Etna
 11. Teluk Berau & Nusalagi, Van Den Bosh
- Provinsi Papua Barat Daya
12. Seribu Satu Sungai Toonebikia
 13. Misool Utara

SOLUSI

- Provinsi Kep. Bangka-Belitung
1. Kabupaten Belitung Timur
 2. Kabupaten Belitung
- Provinsi Sulawesi Tengah
3. Kota Palu
 4. Kota Donggala
 5. Kabupaten Sigi
- Provinsi Jawa Tengah
6. Kabupaten Kebumen
 7. Kabupaten Banyumas
 8. Kabupaten Cilacap

- **>\$200 million**, grant managed since inception
- **\$10-15 million** current annual spending
- Supporting **> 1,000 CSO/LSM** in 33 provinces
- Help Mobilize **> Rp 7 trillion ESG funds** in Indonesia Stock Exchange

SELECTED KEHATI PROGRAMS



- US\$42.6 juta, 10 tahun
- Konservasi ekosistem dan species, pemberdayaan komunitas
- Lokasi: Taman-taman nasional dan Kawasan Konservasi di Sumatra



- US\$28.5 juta, 10 tahun
- Konservasi ekosistem dan species, pemberdayaan komunitas, climate mitigation
- Lokasi: Kalimantan



- US\$38juta*, dana abadi
- Pengelolaan Kawasan Konservasi Laut, Pemberdayaan masyarakat
- Lokasi: Bentang laut kepala burung, Papua barat

KOLEKTIF
(USAID)

- US \$15 juta, 5 tahun
- Penguatan perlindungan keanekaragaman hayati laut dg meningkatkan efektivitas pengelolaan Kawasan Konservasi Perairan (MPA) untuk meningkatkan peluang ekonomi, memobilisasi sumber daya, dan mendukung mata pencaharian lokal.



- US\$6 juta dana abadi
- Penguatan Masyarakat Sipil Indonesia
- Isu keadilan sosial, pengentasan kemiskinan, kesetaraan gender, lingkungan hidup dan perubahan iklim

KEHATI INNOVATION IN SUSTAINABLE INVESTMENT

COMMERCIAL INVESTMENT



financial return

1

DO NO HARM

- a. Encouraging investors and companies to adopt ESG
- b. Investing
- c. Facilitating ESG funds in the market

2

DO GOOD

- a. Promoting Impact Investing
- b. Building up Pipelines
- c. Investing
- d. Mobilizing Funding

PHILANTHROPIST



impact

...making impact, generating financial return, and raising donation at the same time!

Kehati As Investor
(Through Our Endowment Fund)

Kehati As Non Profit
Organization

KEHATI: PIONEERING ESG INVESTING IN INDONESIA'S CAPITAL MARKET

KEHATI screens and assess hundreds stocks in IDX and picks the top 25 in terms of **ESG performance**, and create an Index for them, ie. SRI KEHATI Index

KEHATI collaborates with Fund Management Companies to promote ESG investment in Indonesia:

- Fund Managers launch and sell ESG mutual fund to the investors, and invest the fund to the ESG stocks selected by KEHATI (e.g. stocks within SRI KEHATI Index)
- The Fund Managers share parts of the mgt fees and donate it to KEHATI which then use it in various environmental and social programs



Mobilizing Capital to ESG Friendly Companies in IDX



- In 2014, the first ESG mutual fund (ETF) in Indonesia was launched in Indonesia, a collaboration between KEHATI and Indopremier
- Ramping up our ESG activities significantly since 2018
- Today, KEHATI manages 3 ESG indices, and collaborates with 13 fund managers in Indonesia which mobilize Rp 7 trillion of ESG funds

PERAIH PENGHARGAAN ESG AWARD 2023 BY KEHATI

A. Sektor Capital Market

A. KATEGORI BEST EMITEN

- PT Bank Rakyat Indonesia (Persero) Tbk. (BBRI) •
- PT Unilever Indonesia Tbk. (UNVR) •

B. KATEGORI BEST INVESTOR

- PT BNP Paribas Asset Management •
- PT Batavia Prosperindo Aset Manajemen •
- PT Mandiri Manajemen Investasi •

C. KATEGORI BEST FACILITATOR

- PwC Indonesia •

B. Sektor Impact Investment

A. KATEGORI BEST IMPACT ENTREPRENEUR

- Mahorahora Bumi Nusantara •
- PT Miko Bahtera Nusantara (MYCL) •
- Pable •

B. KATEGORI BEST INVESTOR ON IMPACT INVESTMENT

- PT BRI Ventura Investama •

C. KATEGORI BEST FACILITATOR

- ANGIN •

C. Sektor Debt & Project Financing

A. KATEGORI BEST ISSUER/ BORROWER

- PT Bank Mandiri (Persero) Tbk. (BMRI) •

B. KATEGORI BEST INVESTOR/ CREDITOR

- PT. Sarana Multi Infrastruktur (Persero) •

C. KATEGORI BEST FACILITATOR

- PT. Sarana Multi Infrastruktur (Persero) •



KEHATI'S IMPACT INVESTMENT INITIATIVES

PIPELINES

- Grant program driven
- Grooming our selective grantees to be commercially viable
- TFCAS, SOLUSI, Ford F, etc.

PROGRAM/GRANT DIVISION

FUNDING

- Encouraging investors to invest in impact business
- Investing in impact enterprises ✓
- Setting up an impact fund – preparation process

SUSTAINABLE INVESTMENT DIVISION

KEHATI IMPACT INVESTMENT STRATEGY

Investment Strategy Highlights

We are an early stage investment fund, mainly investing in **early stage (i) SMEs with strong growth and cash generation capabilities**, while 'opportunistically' participating in **(ii) "hypergrowth" venture scale startups**






Our focuses on equity investment, or any other instrument that would result in conversion to equity

We build a competitive advantage due to the backing of KEHATI and our partner (Katalys)

- Development programs
 - Corporate & cap market
 - Tech enablers
- Extensive nationwide KEHATI program network to pilot and scale footprint
- Partnership and exit possibilities (e.g. M&A, IPO)
- Impact tech startup portfolio of our partners

Sustainability Goal

We expect the invested companies to not only **"do no harm"**, but also **"do good"** while delivering **market rate returns**, generating net positive impact in the three defined environmental criteria

Key Themes	Desired Outcomes
 Climate Change	 Sustainable Investment AUM  Total sustainable investment deployed
 Nature & Biodiversity Loss	
 Waste & Pollution	

Let's be a Biodiversity Warrior (BW)!

THE LARGEST YOUTH MOVEMENT NETWORK ON CONSERVATION IN INDONESIA



- Education and outreach
- Environmental campaign
- Training and capacity building
- Research and field intervention
- Advocating public policy
- Small grant award



- Basis permanent in 10 university and still counting
- 5.667 members across Indonesia

ABOUT



Riki Frindos, SCR, CESGA

Riki Frindos joined KEHATI Foundation in 2018 as the Executive Director and the Chair of the Executive Board. Prior to joining KEHATI he has built a career for more than 20 years in the capital market, in Jakarta and Singapore. He was the CEO and Chief Investment of PT Eastspring Investments Indonesia from 2011 to 2017, and, previously, the Investment Director with the Global Macro team of Eastspring Investments Singapore for more than six years. Currently, he is also the Commissioner of PT Mandiri Manajemen Investasi, and the Non-Executive Director of Mandiri Investment Management Singapore Pte. Ltd., both are parts of Bank Mandiri Group.

Riki is a certified Sustainability and Climate Risk (SCR) by Global Association of Risk Professionals, and Certified ESG Analyst (CESGA) by European Federation of Financial Analysts Societies, as well as Chartered Alternative Investment Analyst (CAIA) and Certified Financial Risk Manager (FRM). He graduated from Bandung Institute of Technology (ITB) majoring in Telecommunication Engineering, and also studied Economics in Padjadjaran University.