

Penyelenggara:



ISIF 2023

INDONESIA SOCIAL INVESTMENT FORUM

AKSELERASI PENCAPAIAN SDGs PASCA-COVID-19

Partner:



NUTRICIA



BREAKOUT 2

PERCEPATAN KINERJA PEMBANGUNAN SOSIAL

Narasumber:

Gita Syahrani

Koalisi Ekonomi Membumi

The Westin Resort Nusa Dua, Bali

14 Desember 2023

Creating Resilient Community :

Impactful Collective Actions
through Commodities Value-Chain
at Districts Level



Gita Syahrani

Head of Executive Board | Koalisi Ekonomi Membumi
Board of Advisor | Lingkar Temu Kabupaten Lestari



LINGKAR TEMU
KABUPATEN
LESTARI



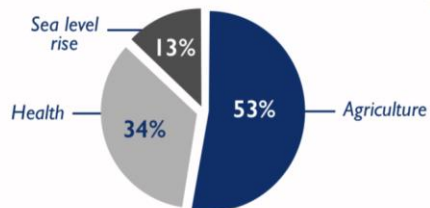


2050

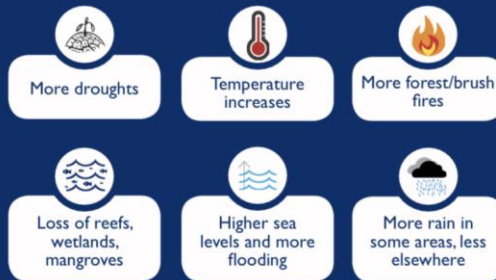
Projected costs ~ 1.4% of GDP

In the year 2050, the annual costs of climate change in Indonesia could total as much as **132 trillion Indonesian rupiahs (US\$14.8 billion).**

Breakdown of projected costs across three areas studied



Projected climate change impacts in Indonesia



KEY TAKEAWAYS

Incomes decline:

Most smallholder farmers will see decreases in productivity.

Agricultural impact negative in most provinces.

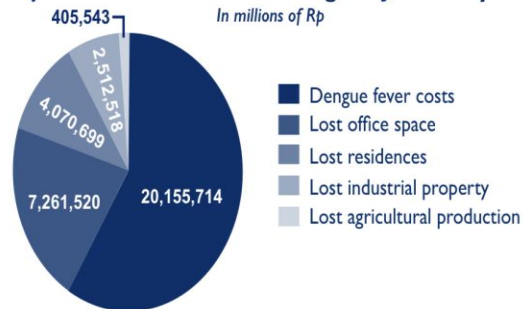
However, output is expected to rise where rainfall increases.

Jakarta province hit hard:

25% of projected national climate change costs, or **34 trillion Rp (US \$3.7 billion).**

Projected costs of climate change in Jakarta by 2050

In millions of Rp



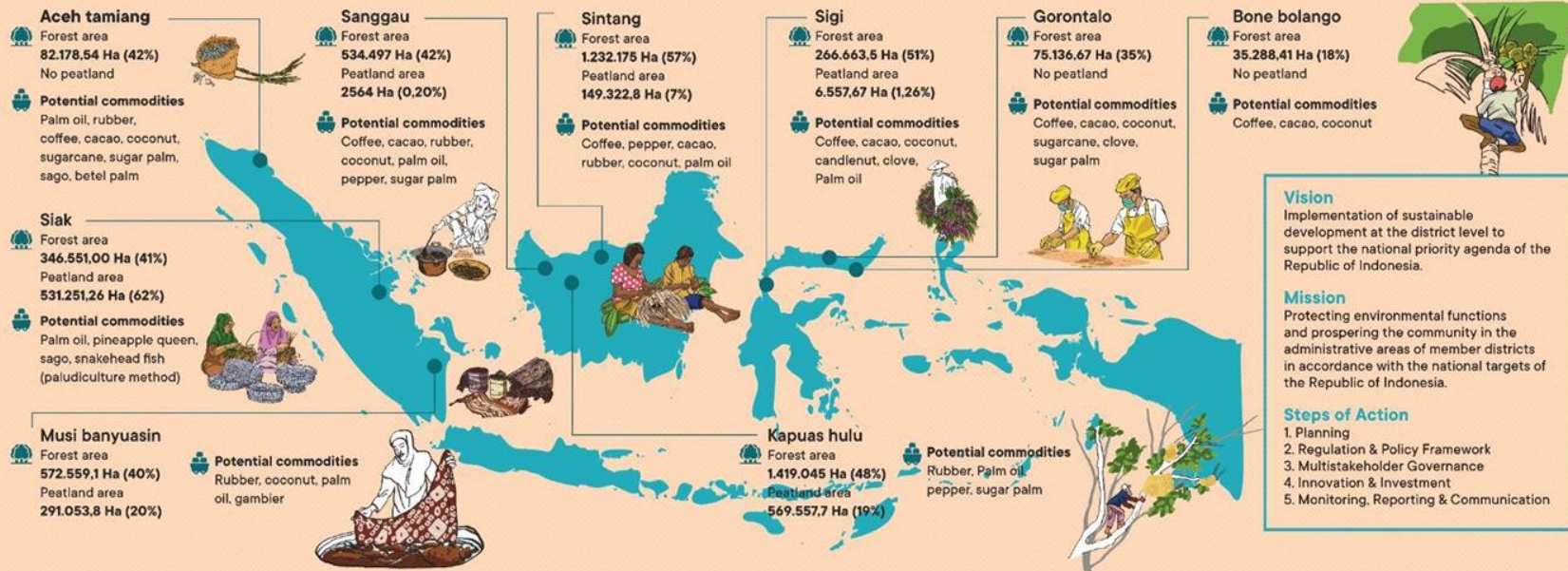
Other provinces with a high share of costs:

Jawa Timur	19%
Jawa Tengah	15%
Jawa Barat	9.5%



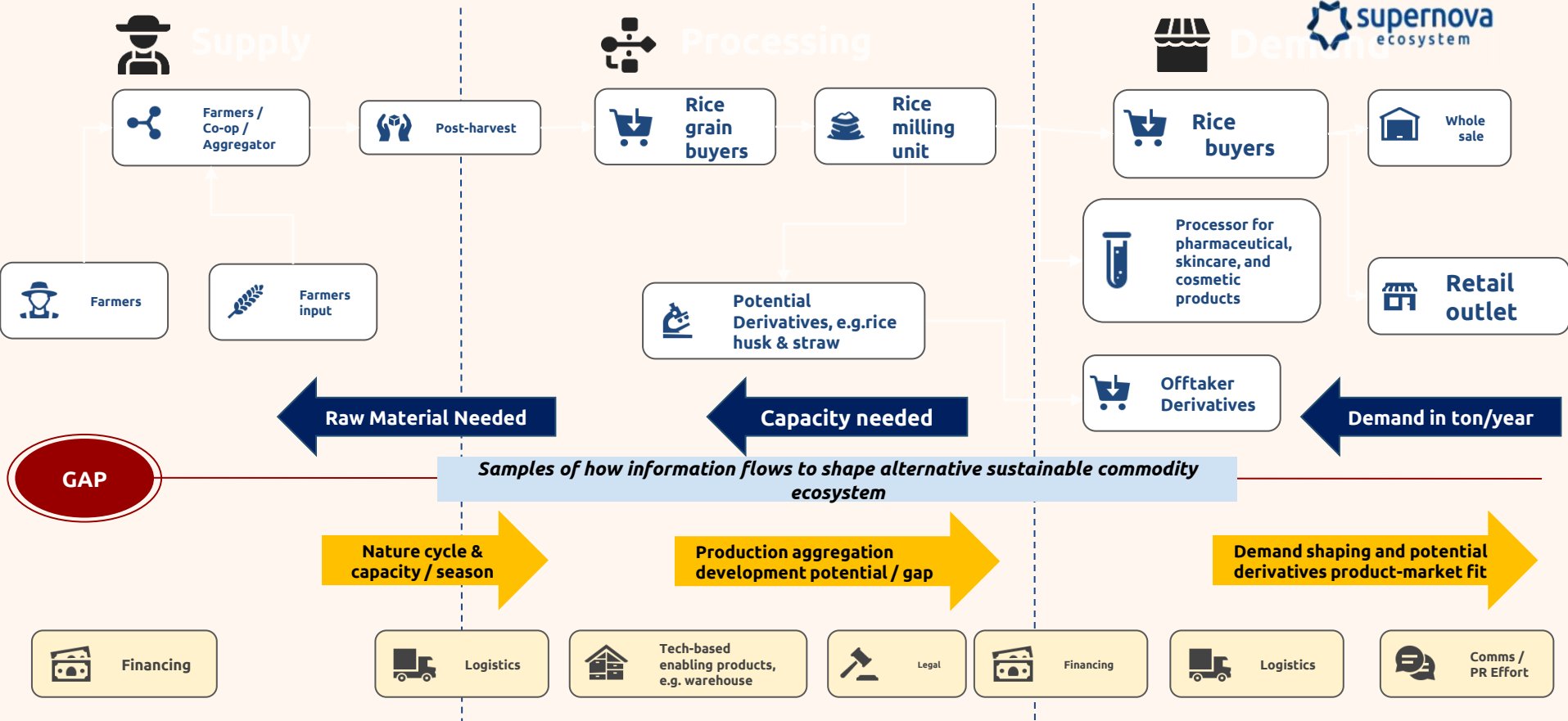
COLLECTIVE ACTION FOR SUSTAINABLE DISTRICTS

Bringing sustainable value-added innovation & business to Indonesia and global value chain



PRIORITY COMMODITIES : ABC3+ (AGROFORESTRY, BAMBOO, COFFEE, COCONUT, CACAO, AQUACULTURE)

Connecting The Dots : Value-Chain Collaboration Canvas (VC3)



SAMPLE INVESTMENT PORTFOLIO CACAO :

Large Company Buyers | National & District Government | Development Partners | Bank | Cooperatives



Commitment Announcement of 20 Million USD Joint-Collaboration between Sigi District Government, PisAgro, Cocoa Sustainable Partnership (CSP), Lingkar Temu Kabupaten Lestari and KEM to boost Sustainable Cocoa Initiative



Development of nature-based solution from cocoa commodities in Sigi district, Central Sulawesi

20 %

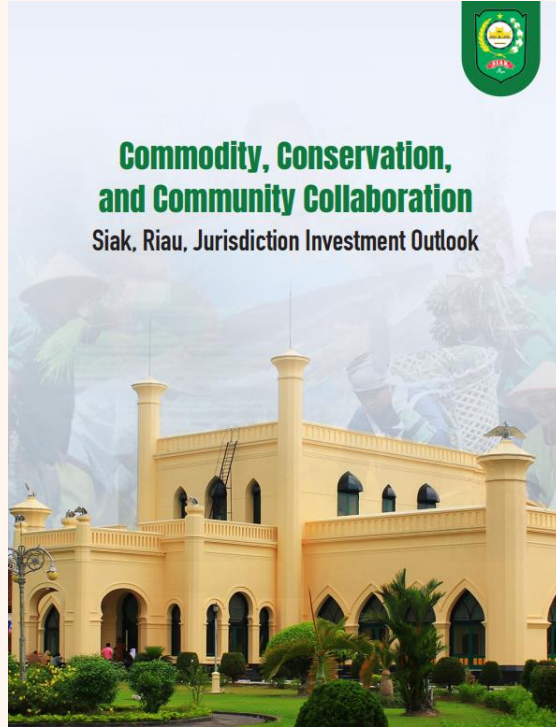
**Sigi's Cocoa Production
percentage in Central Sulawesi**

19.224,4 Ton

27.705 Ha

SAMPLE INVESTMENT PORTFOLIO AQUACULTURE :

Investor | National & District Government | Village-Owned Business | Development Partners | Young Professional



Project Development Map, Siak District



COMMODITY, CONSERVATION, AND COMMUNITY COLLABORATION: SIAK, RIAU JURISDICTION INVESTMENT OUTLOOK

At present, there are eight investable initiatives in Siak. They are a combination of agriculture, paludiculture, peat fisheries, value-adding activities from peat fisheries, sustainable commodity initiatives, and better management of peatlands.

- Sustainable Palm Oil**
This initiative is driven by palm oil downstream companies that outsources palm oil from Siak Districts in collaboration with civil society sector to achieve sustainable palm oil production. This includes landscape monitoring, product traceability, smallholder assistance, capacity building, certification, and audit.
- Sustainable Peat Management through Peat-friendly Commodities: Pineapple**
This initiative supports quality improvement of the peatland and water management through cultivation of pineapple, a peat friendly commodity.
- Sustainable Peat Management through Paludiculture in Land Under Agrarian Reform (Tanah Obyek Reforma Agraria)**
This initiative encourages integrated and comprehensive management of the TORA area based on peat-friendly paludiculture system.
- Sustainable Peat Management through Peat-friendly Commodities: Snakehead Fish**
This initiative organizes snakehead fishery on peatlands.
- Sustainable Peat Management through Zamrud National Park**
This initiative is a form of nature conservation and peatland management. Through the zoning system, the Zamrud National Park provides many social and environmental benefits, namely: research, scientific, educational, cultural, tourism and recreational purposes.
- Sustainable Peat Management through Bungaraya Agrotourism**
This initiative is developed and managed creatively by young people and the surrounding community who are member of the Community-based Tourism Group. The agrotourism area also functions to educate public about environmentally friendly agricultural cultivation.



Aquaculture Value added product on fisheries sector to protect forest and peat in Siak District

The Impact Numbers



Social Welfare

- **2 community-based business entities**
in Siak and Sintang
36 entities in other districts, have transitioned into sustainable businesses in The **9 districts**
- **Renue of sustainable business increase ranging from 150% - 10%**
through programs facilitated by LTKL
- **34 young professionals** have chosen careers in their respective districts and are working in sustainable business sectors in **3 districts**
- **1 new viable product** with national distribution license,
5 new viable products for the market from 2 districts,
27 innovative products in the ideation stage in,
3 districts,
40 sustainable products,
9 districts have been developed
- **127 young professionals** actively involved in business development and sustainable district initiatives in **6 districts**

Building Sustainable Land-Use: Impactful Collective Actions through Commodities Value-Chain



Gita Syahrani

Head of Executive Board | Koalisi Ekonomi Membumi
Board of Advisor | Lingkar Temu Kabupaten Lestari



LINGKAR TEMU
KABUPATEN
LESTARI

